



CHASE FILTERS

AND COMPONENTS

STRAINERS PRODUCT GUIDE

- “Y” STRAINERS
- BASKET STRAINERS
- DUPLEX STRAINER
- STRAINING ELEMENTS
- FRP STRAINERS
- TEMPORARY STRAINERS
- FABRICATED STRAINERS
- “T” STRAINERS
- IN-LINE CHECK VALVES
- SILENT CHECK VALVES
- WAFER TYPE CHECK VALVES
- GLOBE TYPE CHECK VALVES
- SINGLE DISC CHECK VALVES
- DUAL DISC CHECK VALVES
- BALL VALVES
- BUTTERFLY VALVES
- SUCTION DIFFUSERS
- TRI-FLOW VALVES
- FOOT VALVES
- AUTOMATIC STRAINERS
- AND MUCH MORE...

TELEPHONE: 757.327.0036

CHASE FILTERS AND COMPONENTS

"Y" Type Strainers

Cast Iron



YS 12-CI
Class 250
Threaded
Sizes: 1/4 ~ 3"



YS 58-CI
Class 125
Flanged
Sizes: 2 ~ 24"



YS 59-CI
Class 250
Flanged
Sizes: 2 ~ 12"

**Need a strainer?
...It's a no-brainer!**

We routinely stock:

- Sizes 1/4" through 24"
- Pressure Classes 125 ~ 2500
- Standard materials
- Exotic materials
- All end connections

If we don't have it - we'll help you find it!

Bronze & Brass



YS 55-BR
YS 55-BZ
Class 125
Threaded
Sizes: 1/4 ~ 3"



YS 56-BR
YS 56-BZ
Class 125
Solder
Sizes: 1/4 ~ 3"



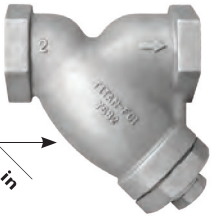
YS 52-AB
Class 250
Threaded
Sizes: 1/4 ~ 3"

Lead Free!*
(See note on the following page)



YS 54-AB
Class 150
Flanged
Sizes: 2 ~ 12"

Carbon & Stainless Steel



Available in
WC6
Alloy 20
316L

YS 81-CS
YS 81-SS
Class 600
Threaded
Sizes: 1/4 ~ 3"

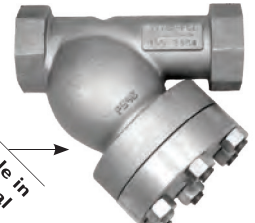
YS 82-CS
YS 82-SS
Class 600
Socket Weld
Sizes: 1/4 ~ 3"



YS 63-CS
YS 63-SS
Class 300
Butt Weld
Sizes: 1/2 ~ 12"



YS 65-CS
YS 65-SS
Class 600
Butt Weld
Sizes: 1/2 ~ 12"



YS 83-CS
YS 83-SS
Class 1500
Threaded
Sizes: 1/2 ~ 3"

YS 84-CS
YS 84-SS
Class 1500
Socket Weld
Sizes: 1/2 ~ 3"

Available in
Additional
Materials



YS 61-CS
YS 61-SS
Class 150
Flanged
Sizes: 1/2 ~ 24"



YS 62-CS
YS 62-SS
Class 300
Flanged
Sizes: 1/2 ~ 12"



YS 64-CS
YS 64-SS
Class 600
Flanged
Sizes: 1/2 ~ 12"

High Pressure
Models Available



YS 70-CS
YS 70-SS
Class 2500
Flanged
Sizes: 2 ~ 8"

YS 71-CS
YS 71-SS
Class 2500
Butt Weld
Sizes: 1 1/2 ~ 10"

CHASE FILTERS AND COMPONENTS

Basket Strainers (Simplex)

Cast Iron



BS 25-CI
Class 125
Threaded
Quick-Open Cover
Sizes: $\frac{3}{8}$ ~ 3"



BS 25F-CI
Class 125
Flanged
Quick-Open Cover
Sizes: 1 ~ 8"



BS 55-CI
Class 125
Flanged
Clamp Cover
Sizes: 2 ~ 12"

Available with
bolted and
clamped cover



BS 65-CI
Class 125
Flanged
Bolted Cover
Sizes: 2 ~ 12"

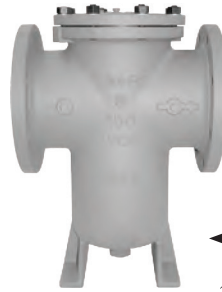
Carbon & Stainless Steel



BS 35-CS
BS 35-SS
Class 150/300
Threaded
Sizes: $\frac{3}{8}$ ~ 3"



BS 35F-CS
BS 35F-SS
Class 150
Flanged
Sizes: 1 ~ 8"



BS 85-CS
BS 85-SS
Class 150
Flanged
Sizes: 2 ~ 12"

Available with
bolted and
clamped cover



BS 86-CS
BS 86-SS
Class 300
Flanged
Sizes: 2 ~ 12"

Fiberglass & Aluminum Bronze



BS 55-FRP
Class 150
Flanged
Sizes: 4 ~ 20"



BS 95-AB
Class 150
Flanged
Sizes: 2 ~ 12"

Lead Free!*

* The YS52-AB, YS54-AB, BS55-FRP, BS95-AB, meet the requirements for **Lead Free** use in potable water systems. The lead content in the wetted surfaces of these products is 0.25% or less as determined by a weighted average. For more information on lead free requirements, contact Chase Filters.



BS 25-CI
Quick-Opening -
Knob Type Cover
Sizes: $\frac{3}{8}$ ~ 3"

BS 85-CS
Full Rated -
Clamped Cover
Sizes: 2 ~ 12"



Optional Cover Designs

Most Basket Strainer models can be constructed with various cover designs including bolted, clamped, and hinged.

CHASE FILTERS AND COMPONENTS

Duplex Strainers



Cast Iron



DS 595-CI

Class 125
Threaded
Cast Iron
Sizes: 3/4 ~ 2 1/2"

DS 695-CI

Class 125
Flanged
Cast Iron
Sizes: 1 ~ 4"

Stainless & Carbon Steel



**DS 596-CS
DS 596-SS**

Class 150
Threaded
Carbon Steel
Stainless Steel
Sizes: 3/4 ~ 2 1/2"

**DS 696-CS
DS 696-SS**

Class 150
Flanged
Carbon Steel
Stainless Steel
Sizes: 1 ~ 4"

Aluminum Bronze



DS 596-AB

Class 150
Threaded
Aluminum
Bronze
Sizes: 3/4 ~ 2 1/2"

DS 696-AB

Class 150
Flanged
Aluminum
Bronze
Sizes: 1 ~ 4"

Pump Products



Tri-Flow Valve

TF 21-CI
Class 125
Flanged
Cast Iron
Sizes: 2 ~ 20"



Foot Valve

FV 50-DI
Class 150
Flanged
Ductile Iron
Sizes: 2 ~ 12"

Ball Valves



BV 25-SS

Male x Female
3000 WOG
Full Port Sizes: 1/4 ~ 1 1/2"
Reduced Port Size: 2"



BV 60-BZ

600 WOG
Male x Female
Full Port Design
Sizes: 1/4 ~ 2"



Suction Diffuser

SD 22-CI
Class 125
Flanged
Cast Iron
Sizes: 2 x 1 1/4 ~ 18 x 18"



Blow-off Valves

Ball Valves can be professionally installed as Blow-off Valves at our factory before shipping.

Foot Valves

Check Valve Models CV 80-SS and CV 20-BZ can also be designed as Foot Valves



CHASE FILTERS AND COMPONENTS

Check Valves

Center Guided



Available with soft and metal seats

CV 90-DI
Class 150/300
Wafer Type - Silent
Ductile Iron
Sizes: 2 ~ 12"



Available with soft and metal seats

CV 91-SS
Class 150/300
Wafer Type - Silent
Stainless Steel
Sizes: 2 ~ 12"



CV 80-SS
Class 300
Threaded / In-Line
Stainless Steel
Sizes: $\frac{3}{8}$ ~ 3"



CV 20-BR
400 WOG
Threaded / In-Line
Brass
Sizes: $\frac{1}{4}$ ~ 2"



Available with soft and metal seats

CV 50-DI
Class 150
Flanged - Globe Style
Ductile Iron
Sizes: 2 ~ 36"



Available with soft and metal seats

CV 51-CS / CV 51-SS
Class 150
Flanged - Globe Style
Carbon & Stainless Steel
Sizes: 2 ~ 36"



Available with soft and metal seats

CV 52-DI
CV 52-CS / CV 52-SS
Class 300
Flanged - Globe Style
Ductile Iron, Carbon & Stainless
Sizes: 2 ~ 36"

Single & Dual Disc



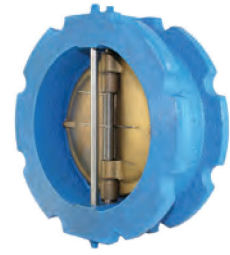
CV 12-CS / CV 12-SS
Class 150
Short Pattern - Wafer Type
Carbon & Stainless Steel
Sizes: 2 ~ 24"



CV 31-DI
Class 150
Wafer - Swing Type
Ductile Iron
Sizes: 2 ~ 12"



CV 32-CS / CV 32-SS
Class 150
Wafer - Swing Type
Carbon & Stainless Steel
Sizes: 2 ~ 12"



CV 41-DI
Class 150
Wafer - Dual Disc
Ductile Iron
Sizes: 2 ~ 48"



CV 42-CS / CV 42-SS
Class 150/300
Wafer - Dual Disc
Carbon & Stainless Steel
Sizes: 2 ~ 48"



CV 44-CS / CV 44-SS
Class 300
Wafer - Dual Disc
Carbon & Stainless Steel
Sizes: 2 ~ 48"



CV 46-CS / CV 46-SS
CV 47-CS / CV 47-SS
Class 600 & 900
Wafer - Dual Disc
Carbon & Stainless Steel
Sizes: 2 ~ 48"

Lead Free* Trim on Chase Check Valves

* Chase's Check Valves have either Stainless Steel or Aluminum Bronze trim to meet the requirements for Lead Free use in potable water systems. The lead content of the wetted surfaces of iron and steel check valve models is 0.25% or less as determined by a weighted average.

CHASE FILTERS AND COMPONENTS

Butterfly Valves & Actuation



Cast & Ductile Iron



BF 75-CI
200 PSI
Wafer Type
Cast Iron
Sizes: 2 ~ 48"



BF 76-DI
200 PSI
Lug Type
Ductile Iron
Sizes: 2 ~ 48"

Butterfly Valve Features:

- Seat is Phenolic Backed Cartridge
- Sizes 2" through 12" in Stock
- Valve Bodies are Epoxy Painted
- Rated for 200 psi Bidirectional Service
- Extended Neck provides 2" of Piping Clearance
- Alignment Holes for easy Installation
- Designed in Accordance with ASME/ANSI Class 125/150
- When ordered with Aluminum Bronze discs, Butterfly Valves meet the requirements for **Lead Free** use in potable water systems. The lead content in the wetted surfaces of all Butterfly Valves with AB discs is 0.25% or less as determined by a weighted average.

Lead Free*
Butterfly Valve Discs Available!

Mounting Options

Butterfly Valves are available with 10-position, actuator, gear box, and chain wheel mounting. Stem Extensions are also available.



Chain Wheel



Gear Box

Universal Mounting Flange

The cast-in actuator flange is universally designed in accordance with ISO 5211 standard dimensions. The mounting flange can accommodate all types of operators such as: 10-position handle kits, gear operators, electric actuators, and pneumatic actuators.

For actuators, Chase may provide both direct mount and bracket mount designs.

Butterfly Valve Actuation

Chase offers a complete line of Pneumatic Actuators and Electric Actuators.



Pneumatic Actuator with Travel Indicator



Electric Actuator for Sizes 3" & Smaller



Electric Actuator for Sizes 4" & Larger



Electric Actuator Mounting



Pneumatic Actuator Mounting

Actuator Accessories:

- Three and Four-Way Direct Mount Solenoid Valves
- Pneumatic & Electro-Pneumatic Positioners
- Limit Switches
- Speed Controls
- Manual Override
- Lock Out Devices
- 4-20 MA and 3-15 PSI

CHASE FILTERS AND COMPONENTS

Fabricated Products

Fabricated Products

*Chase offers a variety of products to your specifications
Our fabricated products include:*

- "Y" Strainers
- Duplex Strainers
- Steam Jacketed Strainers
- Fiberglass Reinforced Plastic Strainers
- And much more
- Basket Strainers
- Orifice Plates
- Temporary Strainers
- Spectacle Flanges
- Plate Strainers
- Single Blinds
- "T" Strainers
- Ring Spacers

Please contact the factory directly for any special projects or applications you may require.



Fabricated "Y" Strainer



Fabricated Basket Strainer



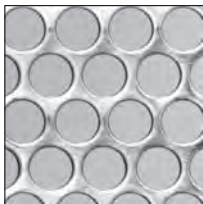
Fabricated Duplex Strainer

Replacement Screens & Baskets

Chase offers elements for all types of strainers including:

- "Y" Strainers
- "T" Strainers
- Basket Strainers
- Duplex Strainers

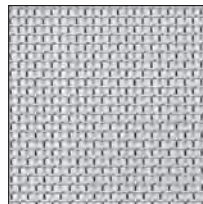
Chase offers straining elements in a variety of perforations, meshes, and materials (Type 304, Type 316, Alloy 20, Monel).



Perforated Screen



Wire Mesh with Perforated Backing



Wire Mesh

Temporary Strainers

*Chase also offers
Temporary / Conical Strainers*



**Temporary Strainer
'Pilgrim's Hat' Type**



**Temporary Strainer
'Witch's Hat' Type**

We can also provide replacement screens and baskets for our competitor's strainers.

Just send us your prints, samples, or simply give us your requirements and let us design a straining element that is right for your application. In most cases, straining elements can be ordered by referencing Chase's or any other manufacturers' strainer model number.



**307 E STREET
HAMPTON, VA 23661
PHONE 757-327-0036
FAX 757-327-0552
INFO@CHASEFILTERCOMPANY.COM**